

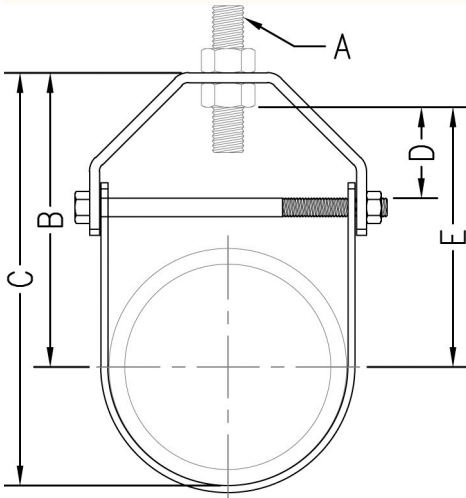


www.phd-mfg.com

CLEVIS HANGERS

FIG. 440, 440F, & 441

LIGHT DUTY CLEVIS HANGER



Function: Designed for the suspension of non-insulated stationary pipe lines in light duty applications. Fig. 440F has a layer of felt which helps to reduce sound and vibration.

Material: Carbon steel
Finish: Plain (Fig. 440), plain with felt lining (Fig. 440F), or electro-galvanized (Fig. 441) (Hot dipped galvanized with electro-galvanized hardware upon request)

Approvals: Complies with Federal Specification A-A-1192A (Type 1) and Manufacturers' Standardization Society ANSI/MSS SP-58 (Type 1) which supersedes ANSI/MSS SP-69.

Ordering: Specify figure number and pipe size.

NOTE: Use of an upper locknut ensures proper performance. If ordering Fig. 440F felt lined hangers for pipe sizes of 3 1/2" (90) or under, order the next largest size to allow for the thickness of the felt lining.

Pipe Size		Rod Size A	B		C		Adjustment D		E		Cross Bolt	Max. Rec. Load		Wt. Each	
												lbs.	kN	lbs.	kg
1/2	(15)	3/8	2 ⁹ / ₁₆	(65.09)	3	(76.20)	1 ¹ / ₄	(31.75)	2 ³ / ₁₆	(55.56)	1/4	150	(0.67)	.17	(.08)
3/4	(20)	3/8	2 ⁵ / ₈	(66.68)	3 ¹ / ₈	(79.38)	1 ⁵ / ₁₆	(33.34)	2 ¹ / ₄	(57.15)	1/4	250	(1.11)	.22	(.10)
1	(25)	3/8	3 ¹ / ₁₆	(77.79)	3 ³ / ₄	(95.25)	1 ¹¹ / ₁₆	(42.86)	2 ¹¹ / ₁₆	(68.26)	1/4	250	(1.11)	.22	(.10)
1 1/4	(32)	3/8	3 ⁵ / ₁₆	(84.14)	4 ¹ / ₈	(104.78)	1 ⁹ / ₁₆	(39.69)	2 ⁷ / ₈	(73.03)	1/4	250	(1.11)	.29	(.13)
1 1/2	(40)	3/8	3 ⁷ / ₁₆	(87.31)	4 ³ / ₈	(111.13)	1 ⁹ / ₁₆	(39.69)	3	(76.20)	1/4	250	(1.11)	.30	(.14)
2	(50)	3/8	3 ¹¹ / ₁₆	(93.66)	4 ⁷ / ₈	(123.83)	1 ¹¹ / ₁₆	(42.86)	3 ¹ / ₄	(82.55)	1/4	250	(1.11)	.34	(.15)
2 1/2	(65)	1/2	3 ¹³ / ₁₆	(96.84)	5 ¹ / ₄	(133.35)	1 ¹ / ₄	(31.75)	3 ¹ / ₄	(82.55)	3/8	350	(1.56)	.68	(.31)
3	(80)	1/2	4 ¹ / ₈	(104.78)	5 ⁷ / ₈	(149.23)	1 ¹ / ₄	(31.75)	3 ⁹ / ₁₆	(90.49)	3/8	350	(1.56)	.72	(.33)
3 1/2	(90)	1/2	1 1/2	(38.10)	6 ¹ / ₂	(165.10)	1 ⁵ / ₁₆	(33.34)	3 ¹⁵ / ₁₆	(100.01)	3/8	350	(1.56)	.84	(.38)
4	(100)	5/8	5 ⁵ / ₈	(142.88)	7 ⁷ / ₈	(200.03)	1 ⁵ / ₁₆	(33.34)	5	(127.00)	3/8	400	(1.78)	.97	(.44)

Adjustment "D" (Top of cross bolt to bottom of hanger rod nut.)